

Monroe County

Baldwin EMC District Map

District 1

NOTE:
THIS MAP REPRESENTS A DEPICTION OF THE DETAILED DESCRIPTION OF BALDWIN EMC'S SERVICE AREA AND DISTRICTS WHICH ARE MORE ACCURATELY DESCRIBED IN ARTICLE IV, SECTION 1 OF THE COOPERATIVE'S BY-LAWS.

Bay Minette

District 6

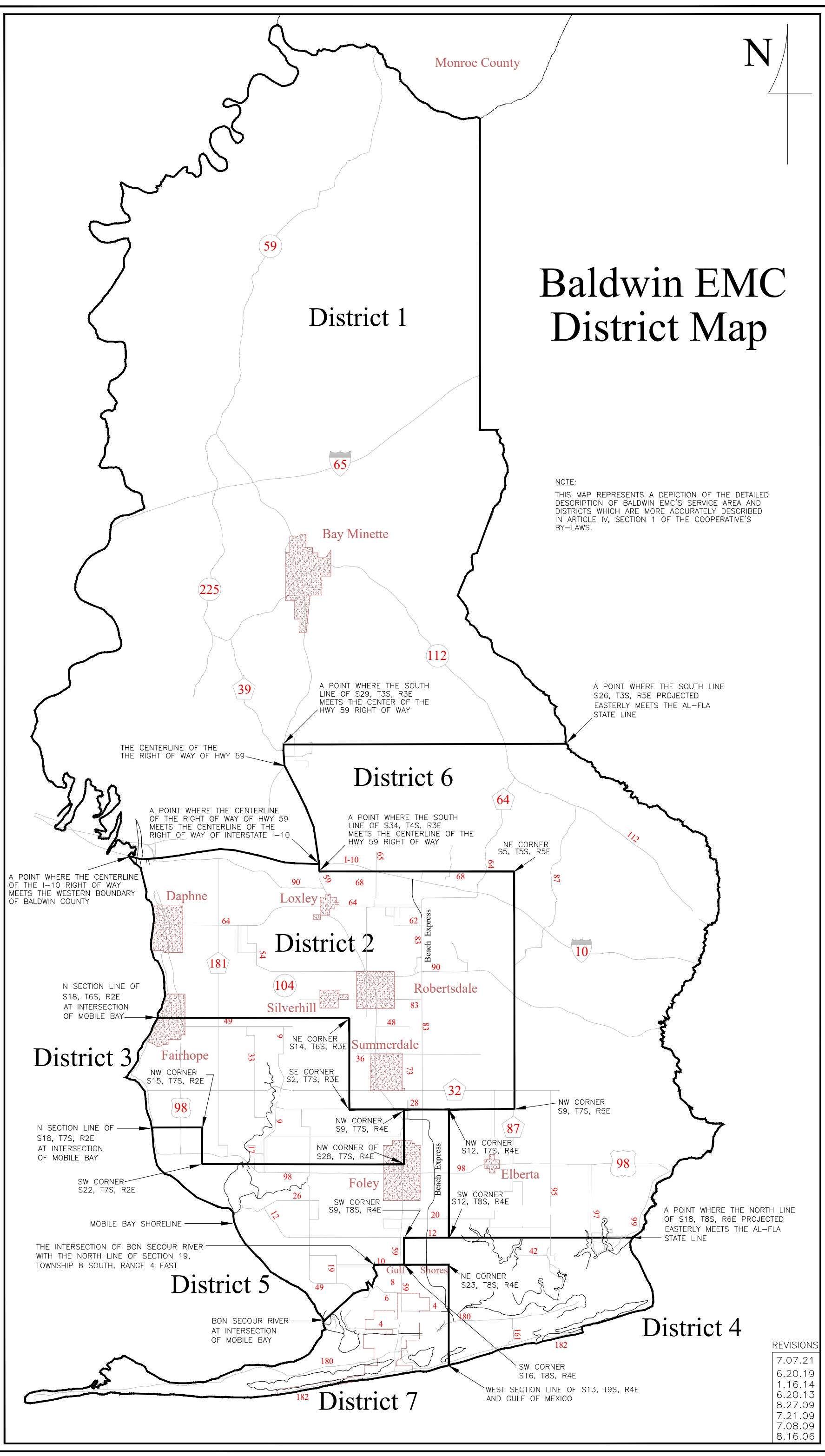
District 2

District 3

District 5

District 4

District 7



THE CENTERLINE OF THE RIGHT OF WAY OF HWY 59

A POINT WHERE THE SOUTH LINE OF S29, T3S, R3E MEETS THE CENTER OF THE HWY 59 RIGHT OF WAY

A POINT WHERE THE SOUTH LINE S26, T3S, R5E PROJECTED EASTERLY MEETS THE AL-FLA STATE LINE

A POINT WHERE THE CENTERLINE OF THE RIGHT OF WAY OF HWY 59 MEETS THE CENTERLINE OF THE RIGHT OF WAY OF INTERSTATE I-10

A POINT WHERE THE SOUTH LINE OF S34, T4S, R3E MEETS THE CENTERLINE OF THE HWY 59 RIGHT OF WAY

A POINT WHERE THE CENTERLINE OF THE I-10 RIGHT OF WAY MEETS THE WESTERN BOUNDARY OF BALDWIN COUNTY

N SECTION LINE OF S18, T6S, R2E AT INTERSECTION OF MOBILE BAY

N SECTION LINE OF S18, T7S, R2E AT INTERSECTION OF MOBILE BAY

SW CORNER S22, T7S, R2E

MOBILE BAY SHORELINE

THE INTERSECTION OF BON SECOUR RIVER WITH THE NORTH LINE OF SECTION 19, TOWNSHIP 8 SOUTH, RANGE 4 EAST

BON SECOUR RIVER AT INTERSECTION OF MOBILE BAY

NE CORNER S5, T5S, R5E

NE CORNER S14, T6S, R3E

SE CORNER S2, T7S, R3E

NW CORNER S9, T7S, R4E

NW CORNER OF S28, T7S, R4E

SW CORNER S9, T8S, R4E

NW CORNER S9, T7S, R5E

NW CORNER S12, T7S, R4E

SW CORNER S12, T8S, R4E

NE CORNER S23, T8S, R4E

SW CORNER S16, T8S, R4E

WEST SECTION LINE OF S13, T9S, R4E AND GULF OF MEXICO

A POINT WHERE THE NORTH LINE OF S18, T8S, R6E PROJECTED EASTERLY MEETS THE AL-FLA STATE LINE

REVISIONS
7.07.21
6.20.19
1.16.14
6.20.13
8.27.09
7.21.09
7.08.09
8.16.06